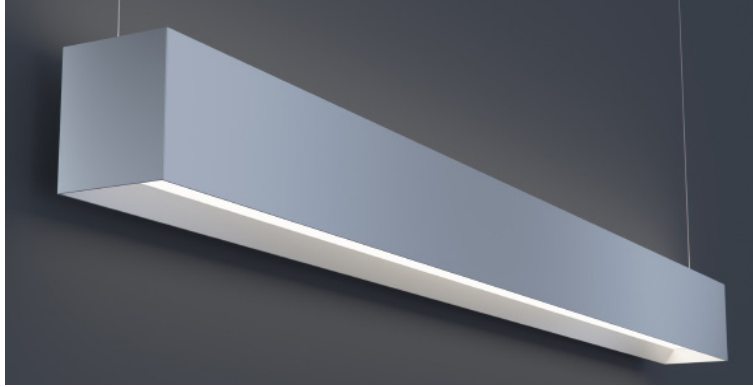


| | | | |
|------|---------|------|------|
| DATE | PROJECT | FIRM | TYPE |
|------|---------|------|------|



Linear, architectural luminaire with beveled aluminum extrusion. For use in indoor applications where an LED luminaire with continuous light is required. Suspended, surface or wall mount installation.

FEATURES

- Direct and Indirect Lighting
- Available In Custom Lengths & Long Runs To 1/16" Accuracy
- Damp Location Rated
- CRI 90+ Standard
- 2700K, 3000K, 3500K, 4000K & 5000K Color Temperatures Available
- Enlighted/Wattstopper Sensors Available

APPLICATIONS Offices, Lobbies, Retail Stores, Classrooms, Reception Areas & Corridors

CONSTRUCTION Extruded Aluminum Housing With Beveled Edge | **OPTICS** Extruded Satin Acrylic Lens

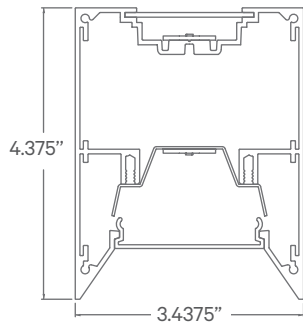
WARRANTY 5 Year Limited Warranty (Covers Standard Components) | **FINISH** Standard Powder-Coated White. Custom RAL Colors Available

FIXTURE RATINGS & CERTIFICATIONS Union Made ETL Listed | Made In The USA Damp Location Rated



ELECTRICAL Integral Driver With 0-10V 10% Dimming Standard. Several Driver Options Available. See Below For Lutron Dimming Information

EXTRUSION DIMENSIONS



LED SYSTEM INFORMATION

| | Nominal System Watts | | Nominal Delivered Lumens | | Nominal Efficacy |
|-----------------|----------------------|-----------|--------------------------|-----------|------------------|
| | DIRECT | INDIRECT | DIRECT | INDIRECT | |
| Standard (LTG1) | 7.5 W/ft | 7.5 W/ft | 705 Lm/ft | 640 Lm/ft | 86 Lm/ft |
| Low (LTG2) | 5.25 W/ft | 5.25 W/ft | 485 Lm/ft | 440 Lm/ft | 87 Lm/ft |
| High (LTG3) | 9 W/ft | 9 W/ft | 810 Lm/ft | 730 Lm/ft | 83 Lm/ft |

Based on a 3500K luminaire using one driver. Please consult factory for custom lumen outputs & wattage.

ORDERING

| | | | | | | | | | | |
|---|---|---|------|-----|---|---|---|---|---|----|
| 1 | 2 | 3 | 4-IN | 4-D | 5 | 6 | 7 | 8 | 9 | 10 |
|---|---|---|------|-----|---|---|---|---|---|----|

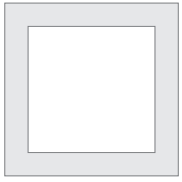
| | | | | | |
|-------------------------------------|--|---|--|--|---|
| 1 - FIXTURE ID KAY4 UP/DN | 2 - LENGTH 2 - 2 ft 4 - 4 ft 8 - 8 ft x'-x" - Custom (specify length) **Patterns available consult factory | 3 - COLOR TEMP 27 - 2700K/90 CRI 30 - 3000K/90 CRI 35 - 3500K/90 CRI 40 - 4000K/90 CRI 50 - 5000K/90 CRI TW* - Tunable White RGBW* - RGB + 3000K *Must use DMX Driver (Remote) | 4 - LED SYSTEM IN - INDIRECT LTG1 - Standard LTG2 - Low LTG3 - High C - Custom Output (ie-C550Lm/ft) | 5 - VOLTAGE D - DIRECT LTG1 - Standard LTG2 - Low LTG3 - High C - Custom Output (ie-C550Lm/ft) | 6 - DRIVER UNV - Universal (120/277V) DB - Standard 10% Dimming (0-10V) DB1% - 1% Dimming (0-10V) DB.01% - .01% Dimming (0-10V) LTEA - Lutron 2-wire 1% Dimming L3DA - Lutron 3-wire 1% Dimming LDE1 - Lutron Digital EcoSystem LDE5 - 5 Series EcoSystem; 5% Dimming DMX - For Color Tuning and RGBW |
|-------------------------------------|--|---|--|--|---|

| | | | |
|---|---|---|---|
| 7 - FINISH W - White (Standard) CC - Custom Color (provide RAL#) | 8 - MOUNTING AC - Aircraft Cable (50") SM - Surface Mount WM - Wall Mount | 9 - CONTROL (Optional) EIS - Integral Sensor by Enlighted WIS - Integral Sensor by Wattstopper | 10 - CIRCUIT EM 120V - Emergency Pack EM 277V - Emergency Pack |
|---|---|---|---|

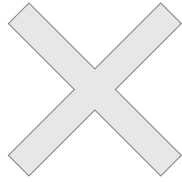
| | | | |
|------|---------|------|------|
| DATE | PROJECT | FIRM | TYPE |
|------|---------|------|------|

CORNERS & PATTERNS

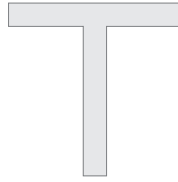
Available with illuminated corners, angles, and custom patterns. **Must consult factory for custom corners, patterns and elevations.**



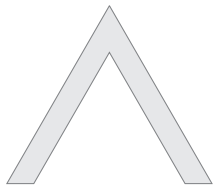
Square Patterns



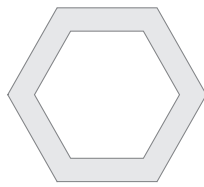
X Patterns



T Patterns



Custom Angles

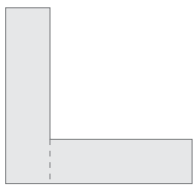


Custom Patterns

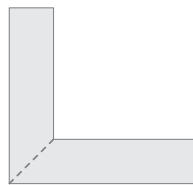


Custom Elevations

LENS CUT OPTIONS



Straight-cut



Mitered Angle